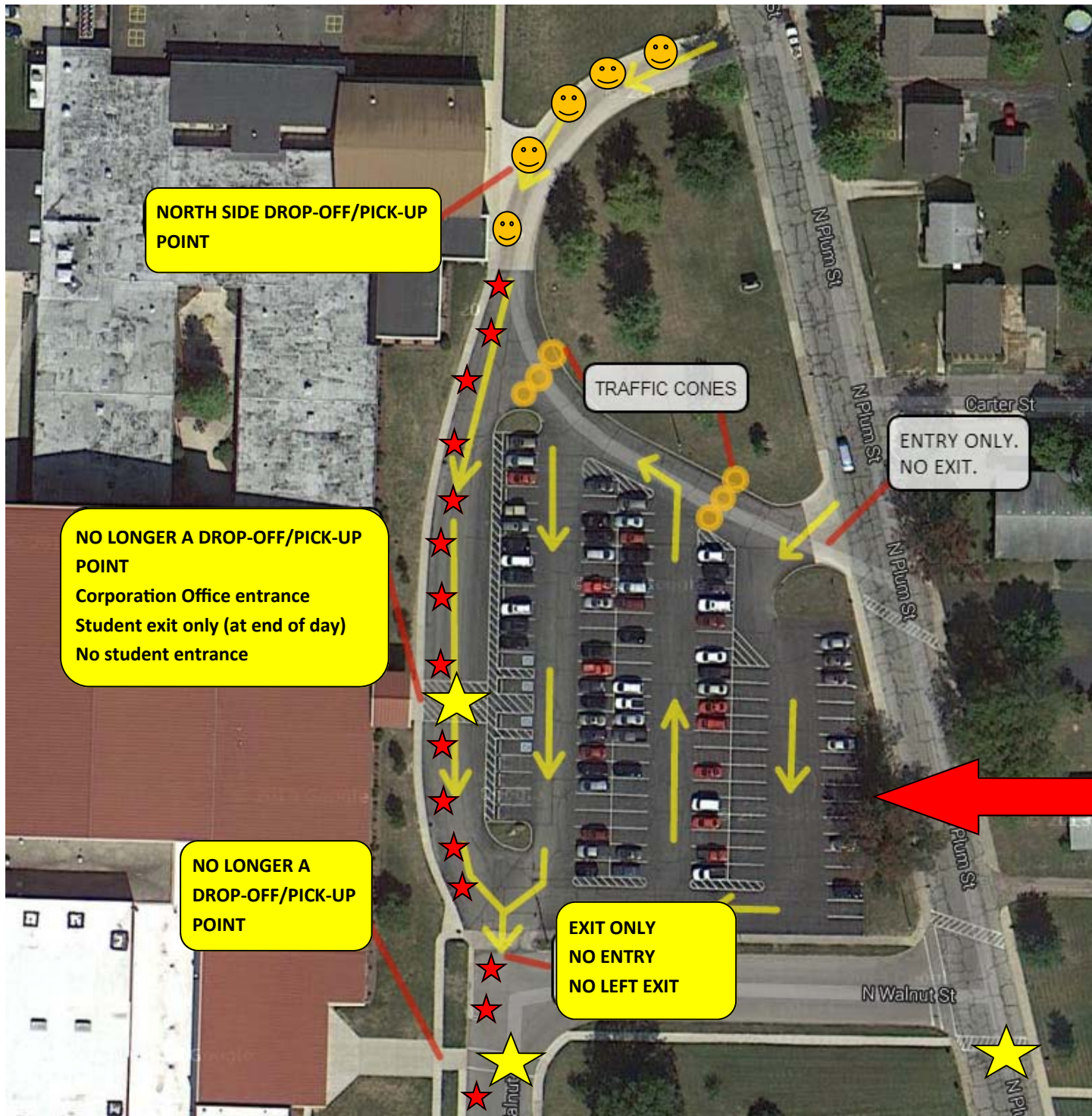


North Side Elementary and RESC Central Office



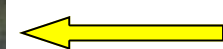
DROP-OFF/PICK-UP ONLY
 —Not available for parking during the day
 —Parents must remain in cars when utilizing drop-off and pick-up before and after school



**NO PARKING
 NO DROP-OFF
 NO PICK-UP**



Cross Walks



Traffic Patterns are designated by yellow arrows

RESC MAIN PARKING LOT



Additional drop-off and pick-up is available by parking in the main parking lot and using the cross-walks to walk students to the building

NORTH SIDE DROP-OFF/PICK-UP POINT

NO LONGER A DROP-OFF/PICK-UP POINT
 Corporation Office entrance
 Student exit only (at end of day)
 No student entrance

NO LONGER A DROP-OFF/PICK-UP POINT

**EXIT ONLY
 NO ENTRY
 NO LEFT EXIT**

TRAFFIC CONES

**ENTRY ONLY.
 NO EXIT.**

N Plum St

N Plum St

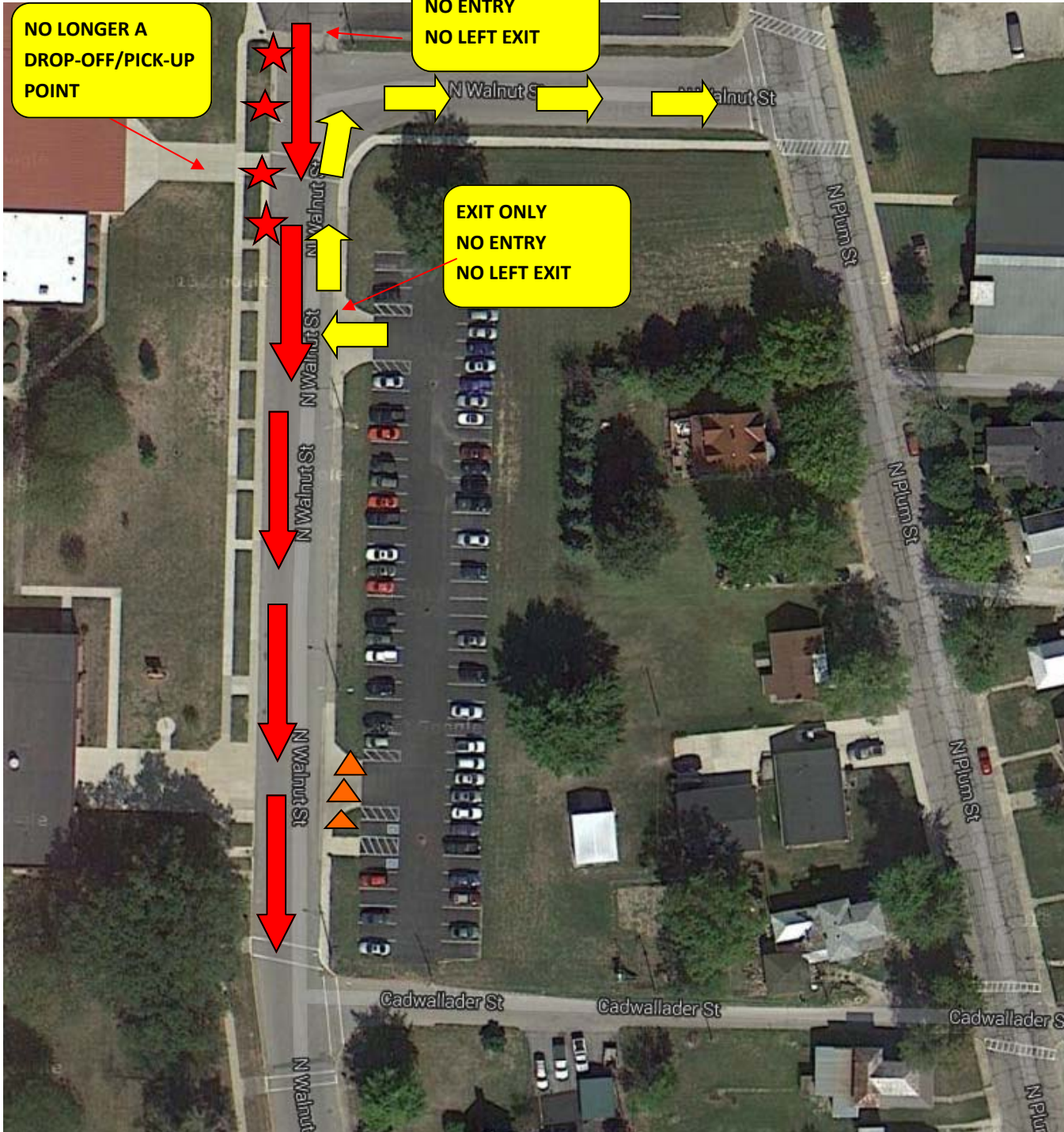
N Plum St

Carter St

N Walnut St

N Plum St

Union City Junior-Senior High School



NO LONGER A
DROP-OFF/PICK-UP
POINT

EXIT ONLY
NO ENTRY
NO LEFT EXIT

EXIT ONLY
NO ENTRY
NO LEFT EXIT

Students will make a right exit
only from the parking lot after
school and continue to Plum
Street

No left exit from the main parking
lot after school.

No Parking
No Drop Off
No Pick Up

No exit to Walnut Street after
school. Cones will be placed
here at he end of the day and
students will exit from the North
of the parking lot.

CHANGES TO PARKING/DROP-OFF/PICK-UP

RESC Main Parking Lot:

- Parents are able to use the parking lot to park and then pick up and/or drop off their students (see North Side Elementary guidelines)
- The parking lot ENTRANCE is located on the northeast side of the lot at Plum Street (this is the only entrance)
- There are only ONE-WAY traffic patterns in parking lot
- The parking lot EXIT is to Walnut Street (this is the only exit)
- There is NO LEFT EXIT from the parking lot to Walnut Street
- Visitors to the Corporation Office will enter the Corporation Office entrance
- Visitors to NS will enter the NS Office entrance.
- Visitors to UC Jr./Sr. HS will enter the UC Jr./Sr. HS entrance.

North Side Elementary:

- All visitors to NS must park in parking lot. There will be NO parking in the drive at any time.
- The main drive to NS Elementary will no longer be available for parking throughout the school day. Visitors to the schools will park in the main parking lot and enter the building at the NS entrance.
- The main drive will be used for parents to exit to Walnut Street after picking-up or dropping-off their students at the NS entrance.
- The “horseshoe pattern” will no longer be used for elementary drop-off or pick-up. During drop-off times and pick-up times (before and after school), the main drive will be one lane only and the driver must remain in the vehicle. Once students are picked up or dropped off, the driver will exit the drive by the Walnut Street exit. There will be NO LEFT EXITS from the parking lot/drive to Walnut Street.
- For additional drop-off, parents will be able to park in the parking lot, walk across the crosswalk, and escort the student to the NS entrance.
- For additional pick-up, parents will be able to park in the parking lot, walk across the crosswalk, meet students at either the NS entrance or the Corp Office entrance, and escort the student to the parked car in the parking lot via the crosswalk.
- Walkers exiting NS will proceed to Walnut Street then head East or South.

Union City Junior-Senior High School:

- There will be no parking along the drive (at the Corporation Office entrance) or on Walnut Street (at the gym entrance) in front of the K-12 campus.
- All visitors to UC Jr./Sr. HS must park in the parking lot.
- Visitors to UC Jr./Sr. HS will enter the southeast Jr/Sr. HS Office entrance.
- The gym entrance is NOT a drop-off or pick-up point but STUDENTS MAY ENTER the building and EXIT the building from this entrance at the beginning and end of the day.
- The Corporation Office entrance is NOT a drop-off or pick-up point and students MAY NOT ENTER the building at this entrance. Students MAY EXIT the building at the end of the school day from this entrance.
- Students exiting the parking lot at the end of the day will exit RIGHT at the north end of the parking lot. The south end will be coned off. There will be no left turn from the student parking lot after school.